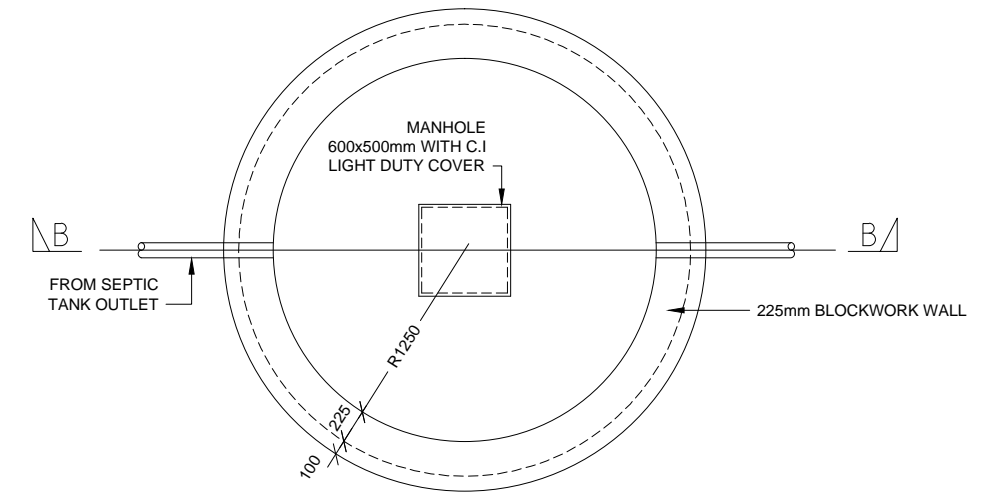
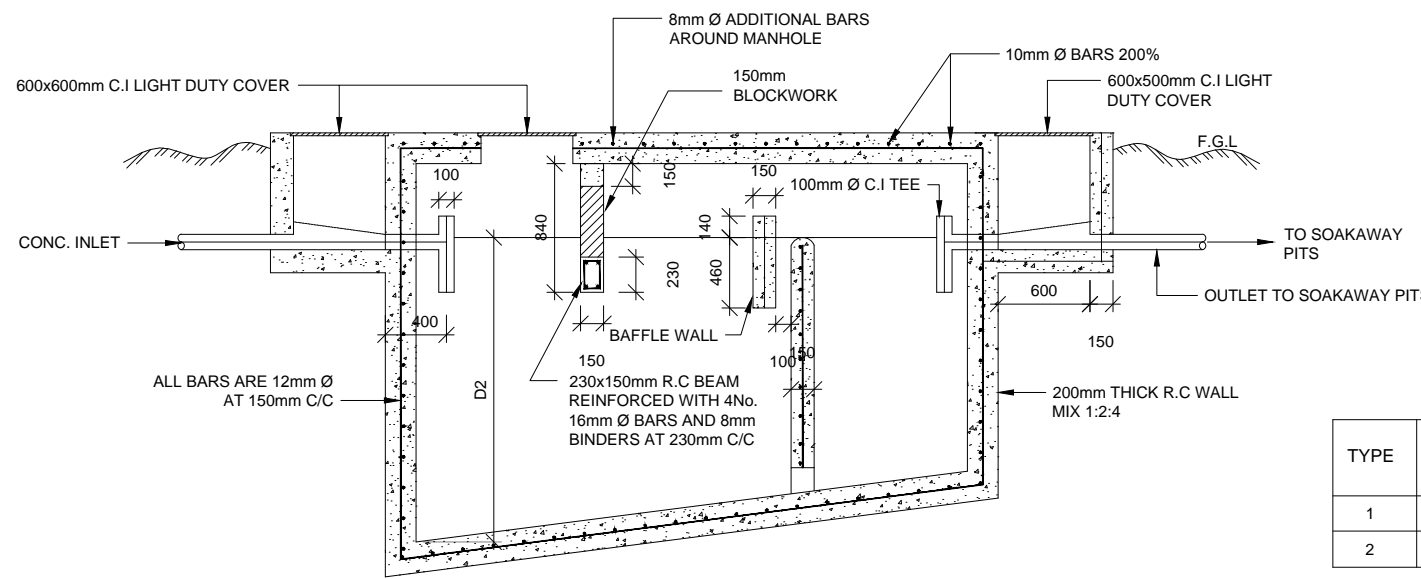


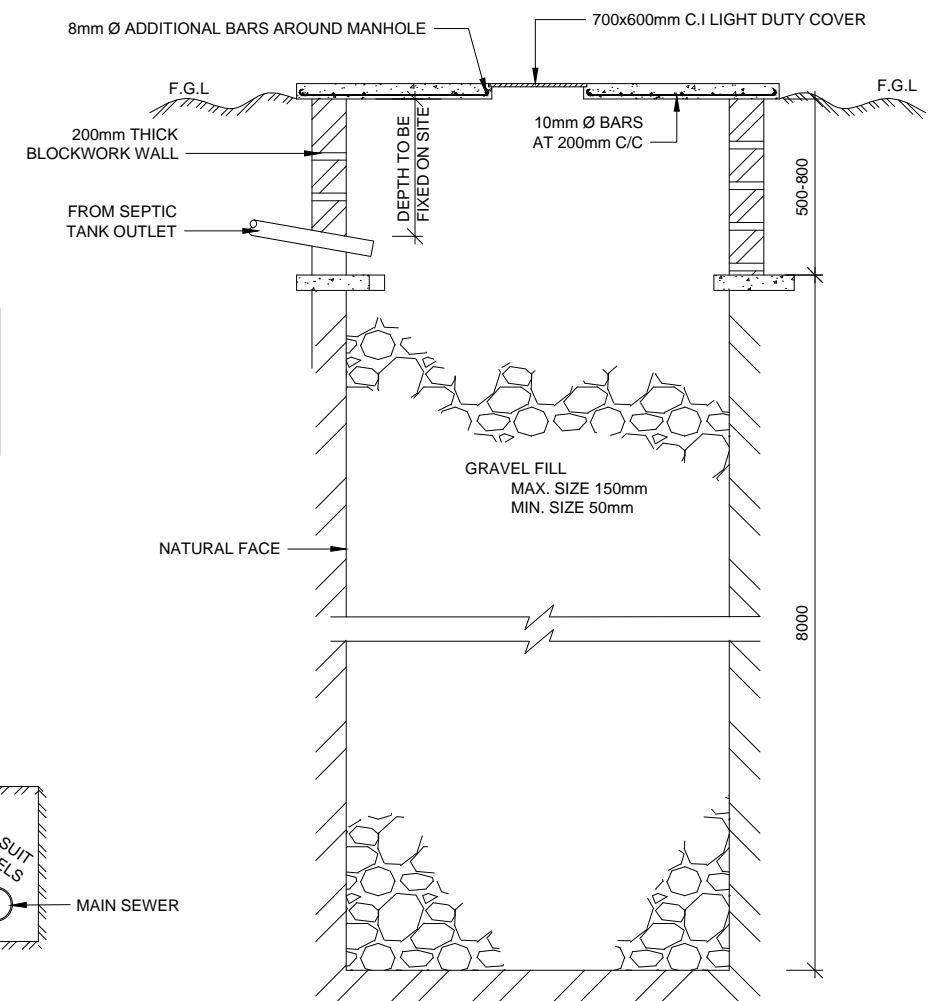
**SEPTIC TANK
PLAN**



**SOAKAWAY PIT
PLAN**



SECTION A-A

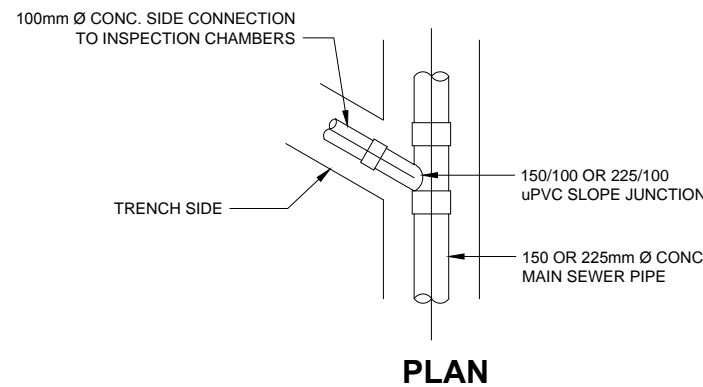


SECTION B-B

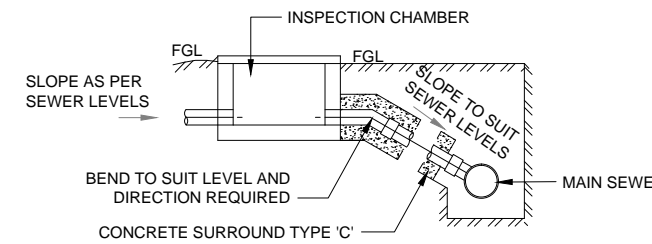
TYPE	TANK CAPACITY (m³)	L/3	W	D1	D2
1	15.90	1675	1830	1525	1905
2	10.50	1370	1525	1525	1865

NOTES

- ALL REINFORCEMENTS FOR SEPTIC TANKS TO BE CUT AND BEND ON SITE AS DIRECTED BY THE ENGINEER
- IN CASE OF ADVERSE SUBSURFACE CONDITIONS, SIZE OF SOAKAWAY PITS TO BE DETERMINED BY PERCOLATION TESTS
- S.R CEMENT TO BE USED FOR ALL CONCRETE WORK
- MIN. CONCRETE COVER TO STEEL REINFORCEMENT TO BE 40mm
- WHERE GROUND CONDITIONS ARE UNSUITABLE DUE TO SAND CONTENT OF SURROUNDING GROUND, SLOTTED WALLING USING 150 OR 200mm WIDE CONC. OR NATURAL BLOCKS SHOULD BE USED IN THE SOAKAWAY PIT TO THE EXTENT DETERMINED BY THE ENGINEER ON SITE
- SEPTIC TANK CAPACITY TO BE DETERMINED BY THE ENGINEER ON SITE
- ALL REINFORCEMENT STEEL TO BE HIGH YIELD SQUARE TWISTED TO BS 4461
- ALL LEVELS AND SETTING OUT DETAILS TO BE CONFIRMED AND APPROVED BY THE ENGINEER ON SITE
- ABBREVIATIONS
 F.G.L - FINISHED GROUND LEVEL
 R.C - REINFORCED CONCRETE
 C.I - CAST IRON
 C/C - CENTRE TO CENTRE



PLAN



SECTION

TYPICAL DETAIL - HOUSE CONNECTION

Consulting Engineer:

Client/Developer:



REV.	DATE	REMARKS

Notes:
 1. All dimensions are in mm unless otherwise stated
 2. The soakaway pit is provisional and shall be adopted in the absence of piped sewer reticulation system

SURVEYED BY:
 DESIGNED BY: S.C.N
 DRAWN BY: C.W.G
 CHECKED BY:
 APPROVED BY:
 SCALES: A3: 1:50

PROPOSED LECTURE THEATRE AT PWANI UNIVERSITY.
 GANZE ROAD, KILIFI, KILIFI COUNTY.

Drawing Title:
**SEPTIC TANK, SOAKAWAY PIT
 AND BUILDING CONNECTION DETAIL**
 SHEET 1 OF 1

Date: 22/06/2016 Drg. No. 6/2016 Rev.